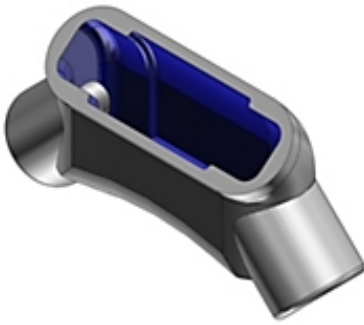




**Catalog Number:** LU448  
**Product ID:** 7TAD013830R0015  
**UPC Number:** 78620967335  
**Status:** A



Actual



Representative

1-1/4 Inch Form 8 (LU) Conduit Elbow for Use with Rigid/IMC Conduit

- 4 to 1 SKU reduction - replaces LL, LR, LB, and C conduit bodies
- Radius is the same as the bend conduit. Pull wire through the body
- Angled cover port enables easier wire pulling and uses standard covers
- Uses standard covers
- BlueKote four-layer protection provides internal and external corrosion resistance
- UL Listed as an enclosure - splices are allowed inside the LU
- Rated for 40% wire fill - avoids conduit system de-rating

#### North American Specifications (UNSPSC)

UNSPSC	39131708 Electrical conduit fitting body
IGCC	5563 Electrical conduit fitting body
Type	Form 8 Conduit Body
Special Features	Tapered NPT Threads and Integral Bushings to Protect Wire Insulation
Application	Connect Conduit Sections, Provide Easy Access to Conductors for Maintenance and Future System Changes
Standard	UL E2969, CSA
Hub Size	1-1/4 in
Form	Form 7
Material	Iron
Finish	Zinc-Plating with Acrylic Coating

#### Packaging

Inner Quantity	2
Inner Dimensions (inches)	8.43x6.93x3.87
Outer Quantity	10
Outer Dimensions (inches)	25.25x8x10.75
Weight Uom	4.3 lbs. Each

#### Documents / Support Tools

Technical Drawing / Data Sheet	WSD-000563
--------------------------------	------------